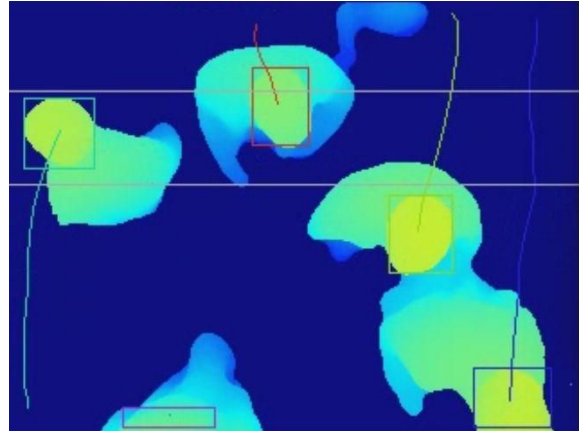




ENLITEON | EDGE 1.2 | 3D People tracking platform

- People counting/tracking Software platform
- Exploits commercial 3D video cameras
- Can turn any 3D sensor in a people tracker
- Multi-platform, portable, open unified API
- Vendor-neutral, sensor technology agnostic
- Realtime bi-directional passage counting
- Detects presence in user definable zone
- Color imaging if supported by camera
- Fully preserves personal privacy



Robust - Exploiting the latest 3D video technologies ENLITEON EDGE software delivers simultaneous counting of any number of people with unprecedented levels of accuracy and robustness. In fact, the use of 3D cameras guarantees a robust shape detection and background/foreground separation. Moreover, they handle occlusions, shadows and reflections better than 2D cameras.

Flexible - ENLITEON EDGE works indoor and outdoor at different distance ranges. EDGE tracks the position of people in real-time allowing to compute the direction of movement and speed. Moreover the presence of people in a configurable region of interest can be monitored.

Universal - EDGE runs under Linux and has been ported to ARM, INTEL X86 and NVIDIA hardware platforms. The differences among sensor technologies and brands are shielded by EDGE, freeing application developers from hardware dependencies.

Smart - ENLITEON EDGE detects persons' features like head and shoulders and counts them separately, even in crowded situations or in case of piggybacking/tailgating attempts.

Designed for integration - A comprehensive and powerful MQTT and RESTful API allows seamless network integration from mobile apps and third-party supervisory systems. Enliteon middleware software creates a layer of abstraction that allows integrators to develop applications usable on multiple hardware platforms with minimum efforts.

Scalable - The event based communication protocol and its intrinsic scalability makes EDGE the ideal solution for cloud-based architectures capable of seamlessly growing in size and geography.

Customizable - Upon request, Enliteon can provide business partners with design and integration services on hardware and software platforms of their choice to minimize investments and time-to-market.

Cost effective - In times of continuous technological evolution, platform independence protects investment during the entire product life cycle, reducing production and development costs.

Future proof - ENLITEON software guarantees backwards compatibility over time, a feature that allows to mix or upgrade different generations of products and preserve prior investments while keeping unlimited system scalability.

Technical features (sensor and platform dependent)

People counting	Simultaneous real-time directional counting of multiple person
Presence in ROI	Presence detection within user-defined region of interest (ROI)
People tagging	Approximate person's height measurement
Calibration	Simple calibration of height and background
Logging	Metadata, events and snapshots
Depth sensor technologies	Stereovision, Structured Light, Time of Flight
Supported depth sensor	See list below
Ambient	Indoor and Outdoor
Depth image	from 320 x 240 up to 960 x 1080 @ 30 FPS
Range	From 2 m to 15 m depending on sensor
Field of view	Variable with sensor types. Approximately 60° h x 50° v
Color image	Up to 1080 x 960 @ 30 FPS
Connectivity	USB 2.0, USB 3.0, Ethernet, wifi
Supported HW architectures	Intel x86, ARM, NVIDIA Jetson
Supported OS	Embedded Linux
Software integration	MQTT and RESTful API

Supported 3D cameras

Generic	OpenNI
ASUS	Xtion
Bluetechnix	Sentis, Argos
Creative	Senz3D
INTEL	RealSense
Microsoft	Kinect
Primesense	Carmine
Softkinetic	DepthSense
Orbbec	Astra/Persee
Stereolabs	ZED

Professional services

ENLITEON expertise in designing embedded people counting and tracking systems including tailgating detection and virtual man-trap functionalities is available to customers and partners. ENLITEON offers from simple software customization services to the porting on partner's hardware/software platforms or even the design of complete private label solutions compliant with custom specifications.

Starter Kits

For immediate evaluation, testing and integration purposes ENLITEON added value partners can supply CORE Starter Kits: fully working reference design platforms of great help while implementing final products. Given the portability of the algorithms, custom starter kits covering different needs (indoor, outdoor, short/long range) can be implemented following partner's specifications. Contact us describing your needs.

DS-EDG-1.2

ENLITEON Limited
548-550 Elder House
Milton Keynes MK9 1LR UK

Tel.: +44 (0)1908 904388
email: info@enliteon.com

FOLLOW US

